



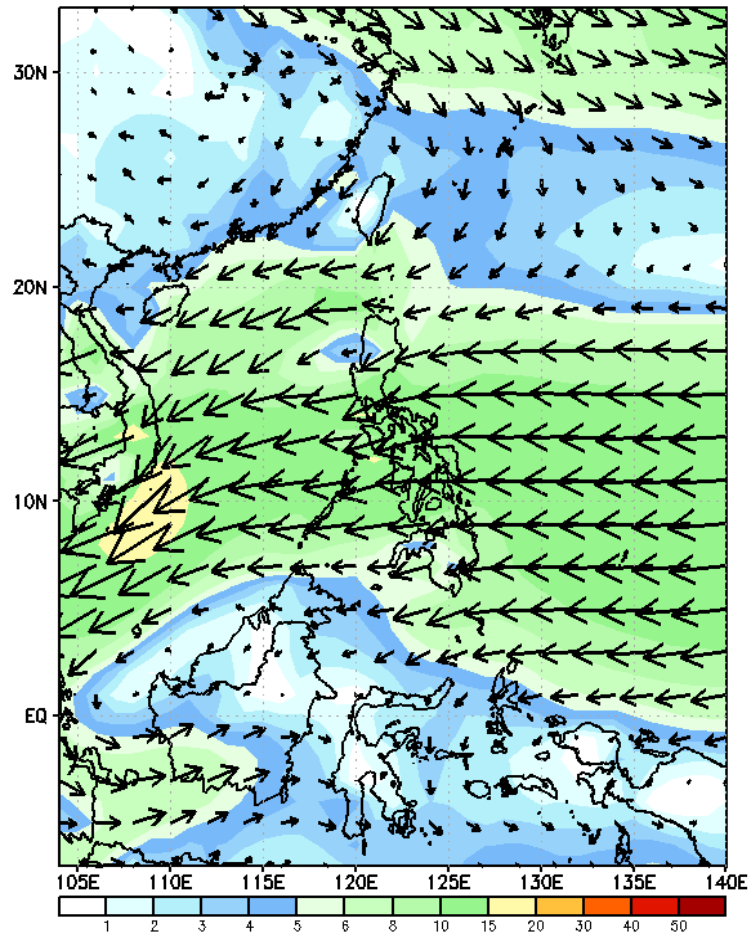
# Week 1 & Week 2 Forecast for the Philippines using GEFS Model



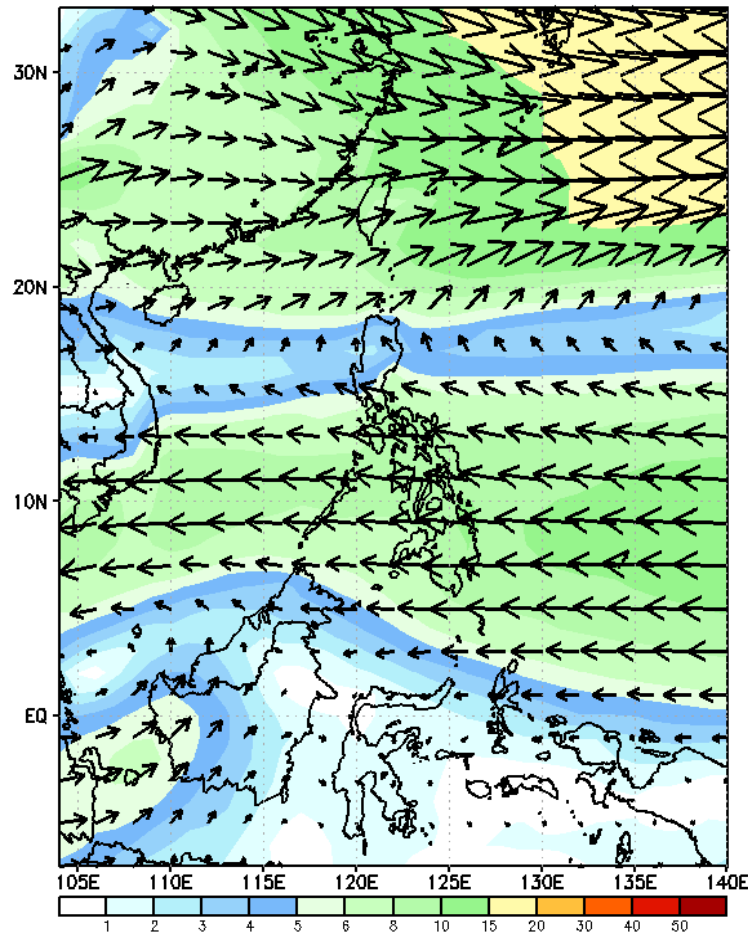
# GEFS Week-1 Wind Forecasts:

Week 1: Jan 10-16, 2025

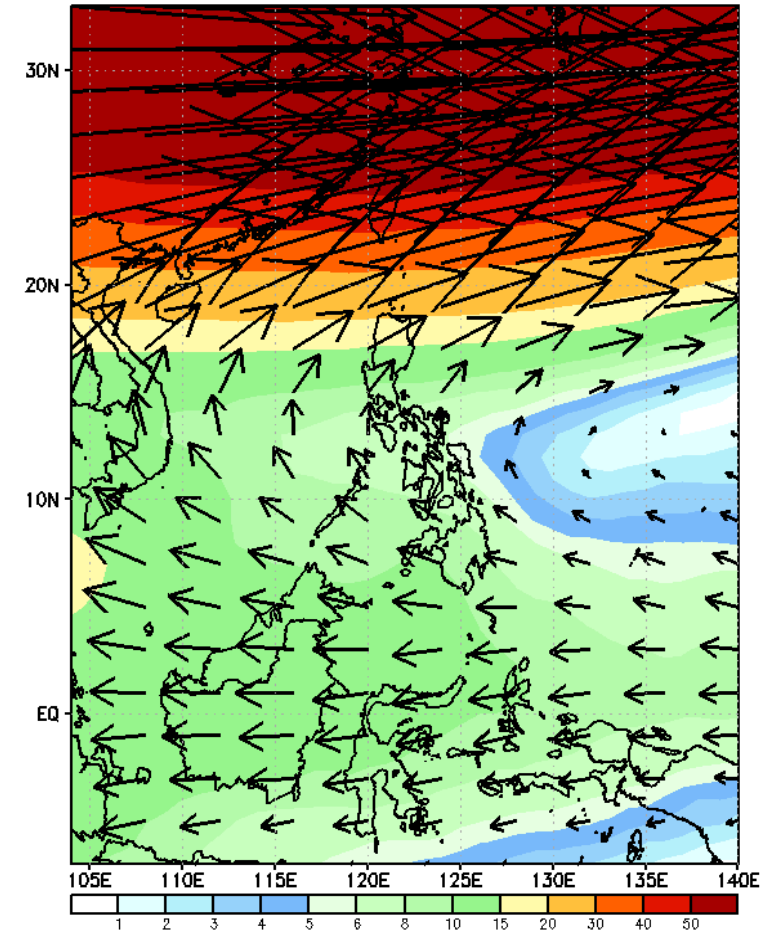
GEFS Week-1 850-hPa Wind Total  
Valid: 20250110 - 20250116



GEFS Week-1 700-hPa Wind Total  
Valid: 20250110 - 20250116

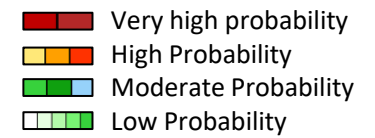


GEFS Week-1 200-hPa Wind Total  
Valid: 20250110 - 20250116



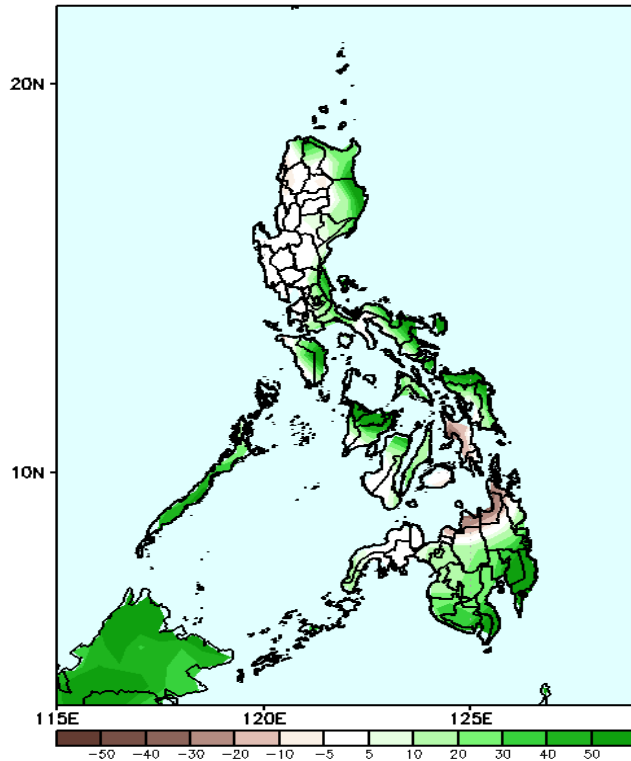
Northeast Monsoon affecting Northern Luzon while Easterlies affecting the rest of the country during the forecast period

# Precipitation Anomaly and Exceedance Probability > 25/50 mm



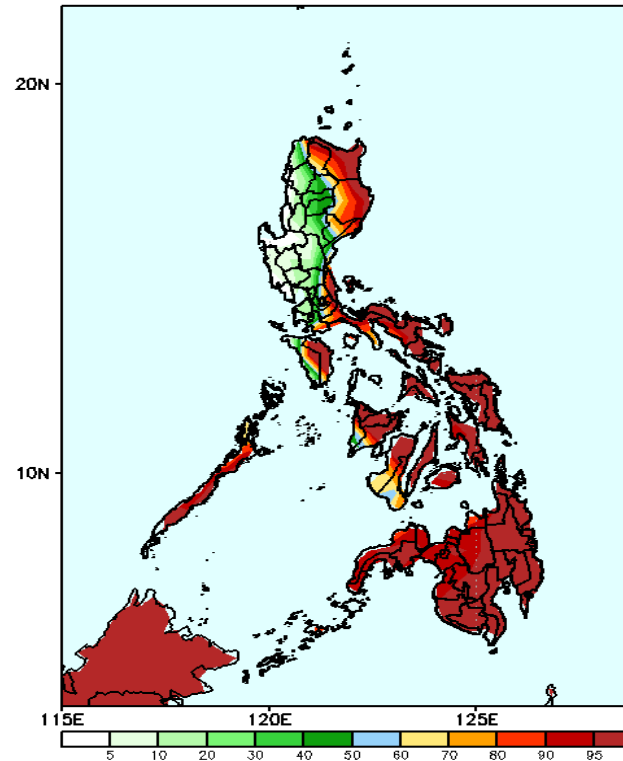
## Week 1: Jan 10-16, 2025

GEFS Week-1 Precip Anomaly  
Valid: 20250110 - 20250116



Increase of Rainfall of 20-60mm is expected in most parts of Eastern and Southern Luzon; 40-100mm in most parts of Visayas and Mindanao while 10-30mm rainfall deficit is expected in Leyte provinces, Lanao del Norte, Misamis oriental, Agusan Del Norte, and Surigao del Norte.

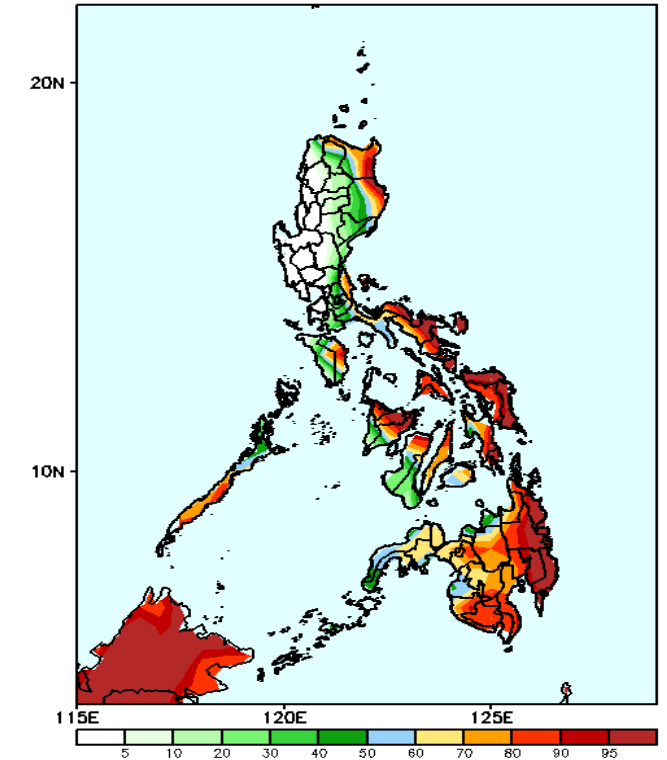
GEFS Week-1 Exceedance Prob. > 25mm  
Valid: 20250110 - 20250116



### Probability to Exceed 25mm

- High to very high over most parts Apayao, Cagayan, Isabela, Aurora, Quezon, Mindoro, Palawan, Bicol Region, Visayas and Mindanao;
- Low to Moderate over the rest of Luzon.

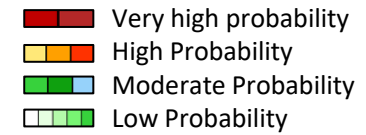
GEFS Week-1 Exceedance Prob. > 50mm  
Valid: 20250110 - 20250116



### Probability to Exceed 50mm

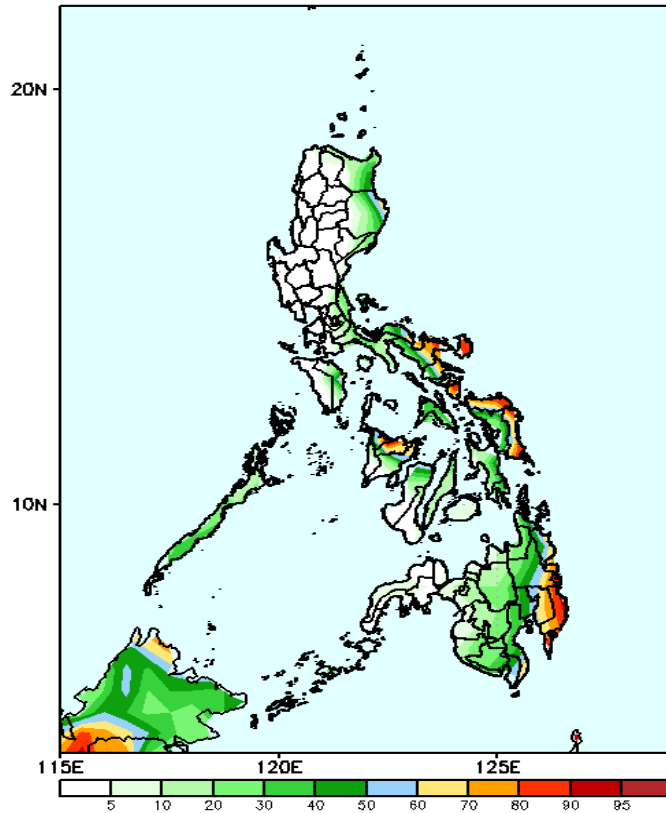
- High to very high over the easternmost part of Cagayan and Isabela, Bicol Region, northern part of Panay Island, Samar Provinces, and Eastern Mindanao;
- Moderate to high over Batanes, northern part of Apayao and Ilocos Norte, the rest of Cagayan and Isabela, Quezon, Rizal, most of MIMAROPA, the rest of Visayas and Mindanao;
- Low to moderate over the rest of Luzon.

# Exceedance Probability > 100/150/200 mm



## Week 1: Jan 10-16, 2025

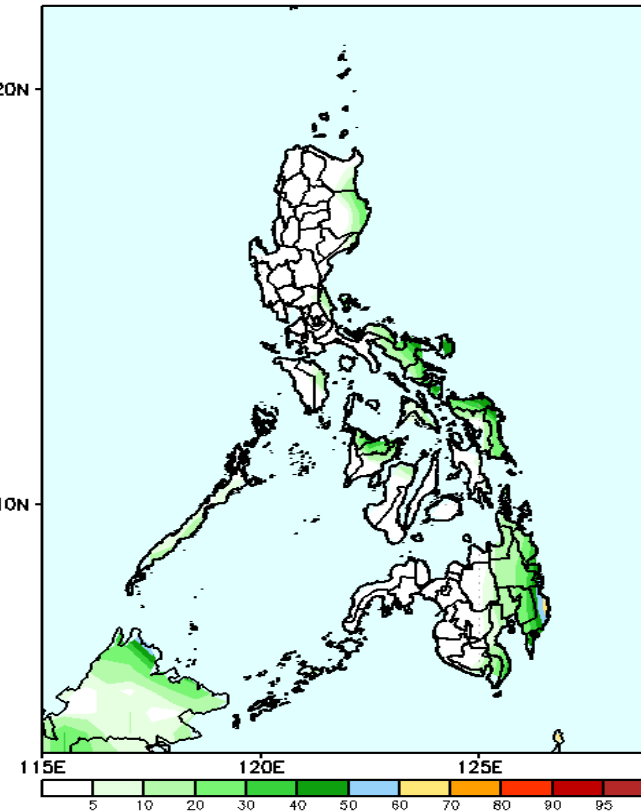
GEFS Week-1 Exceedance Prob. > 100mm  
Valid: 20250110 - 20250116



### Probability to Exceed 100mm

- Moderate to high over northeastern part of Isabela, Bicol Region, northern part of Panay Island, Northern and Eastern Samar, and most of Eastern Mindanao;
- Low to moderate over the rest of Eastern Visayas and Mindanao;
- Low over the rest of the country.

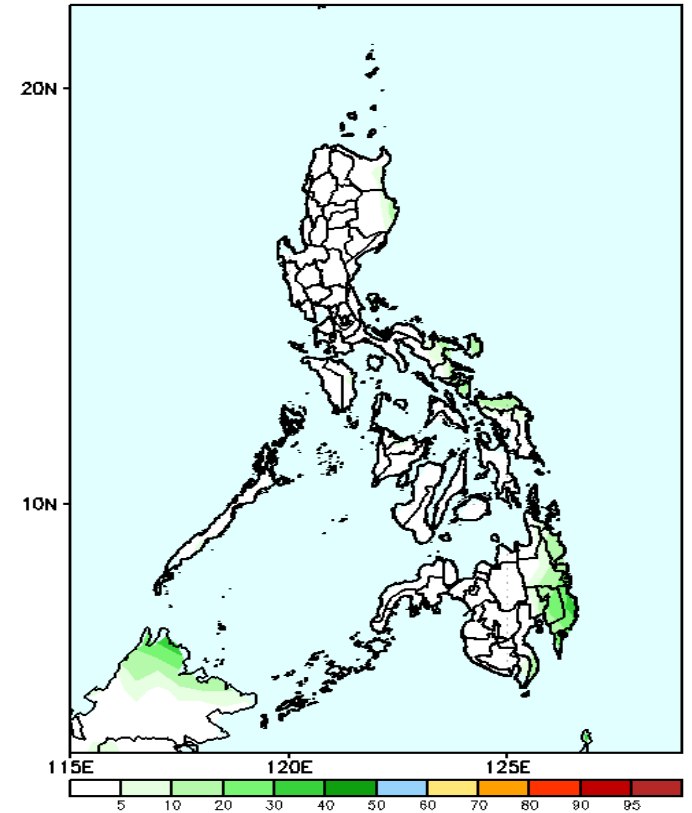
GEFS Week-1 Exceedance Prob. > 150mm  
Valid: 20250110 - 20250116



### Probability to Exceed 150mm

- Moderate to high over Davao Oriental;
- Low to moderate over Southern Luzon, Northern and Eastern Samar and the rest of Eastern Mindanao;
- Low over the rest of the country.

GEFS Week-1 Exceedance Prob. > 200mm  
Valid: 20250110 - 20250116



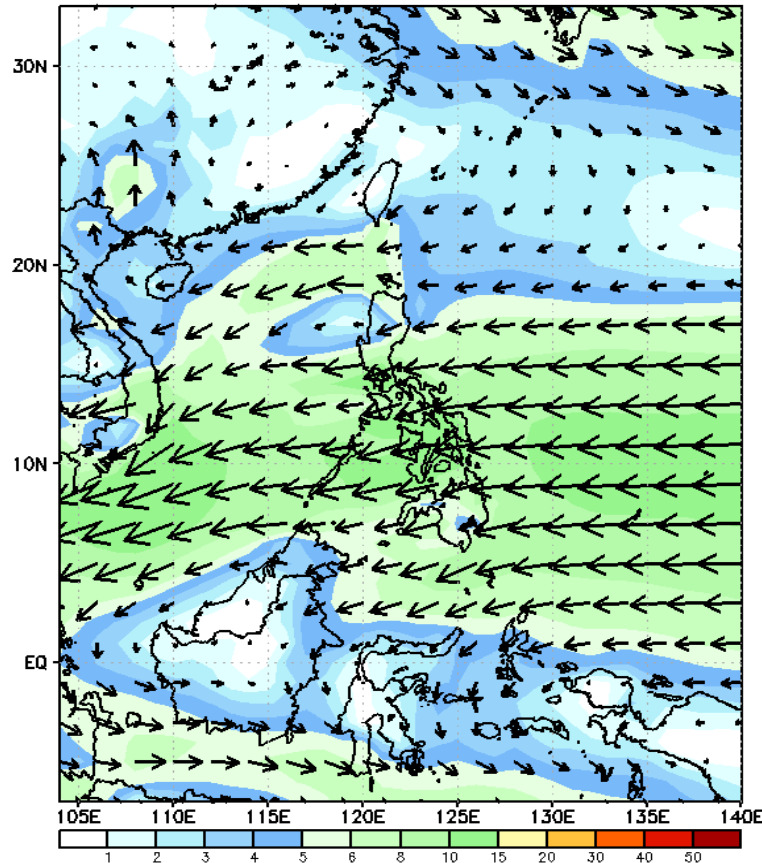
### Probability to Exceed 200mm

- Low across the country.

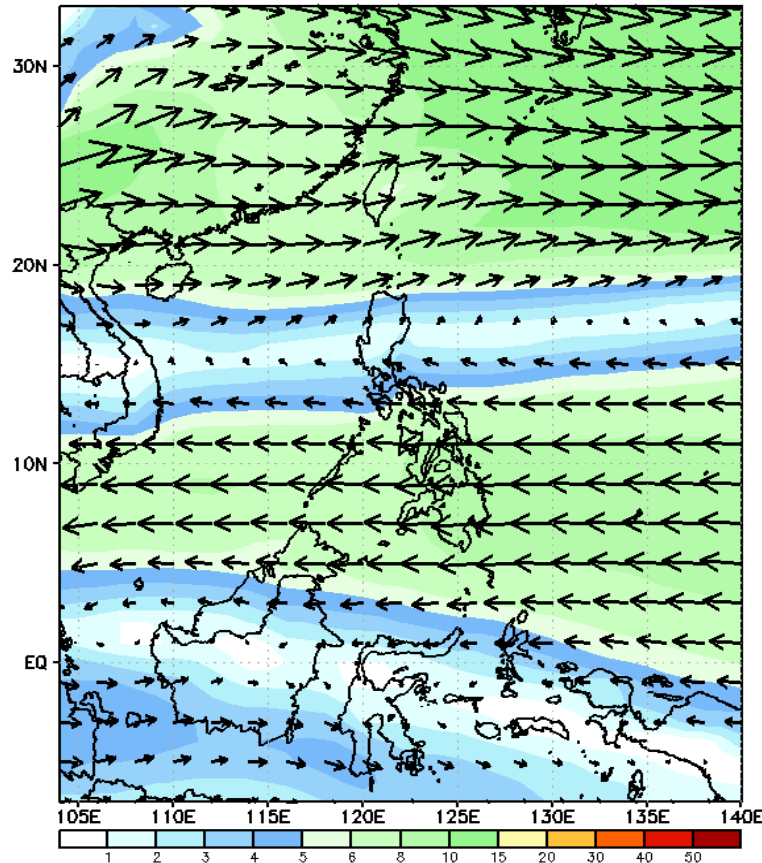
# GEFS Week-2 Wind Forecasts:

Week 2: Jan 17-23, 2025

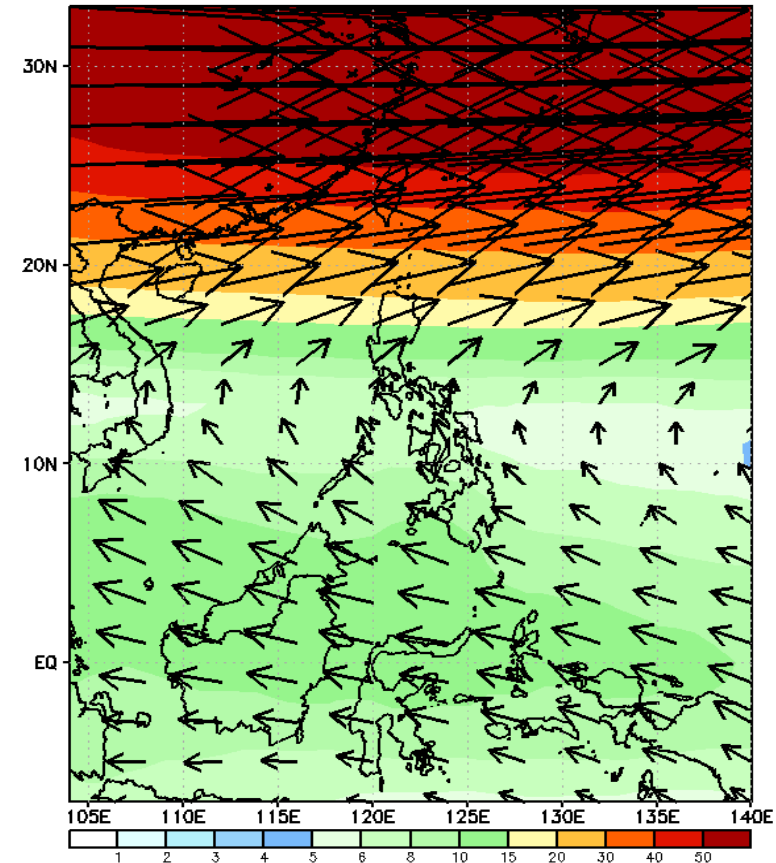
GEFS Week-2 850-hPa Wind Total  
Valid: 20250117 - 20250123



GEFS Week-2 700-hPa Wind Total  
Valid: 20250117 - 20250123

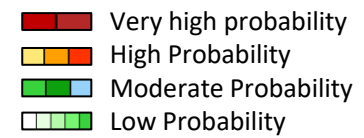


GEFS Week-2 200-hPa Wind Total  
Valid: 20250117 - 20250123



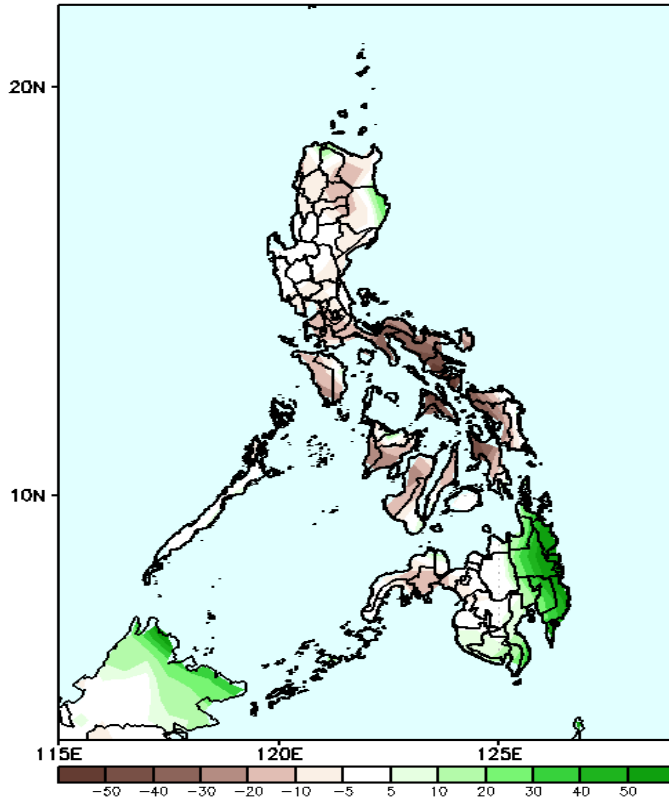
Northeast Monsoon will likely affect Northern Luzon while Easterlies will likely affect the rest of the country during the forecast period

# Precipitation Anomaly and Exceedance Probability > 25/50 mm



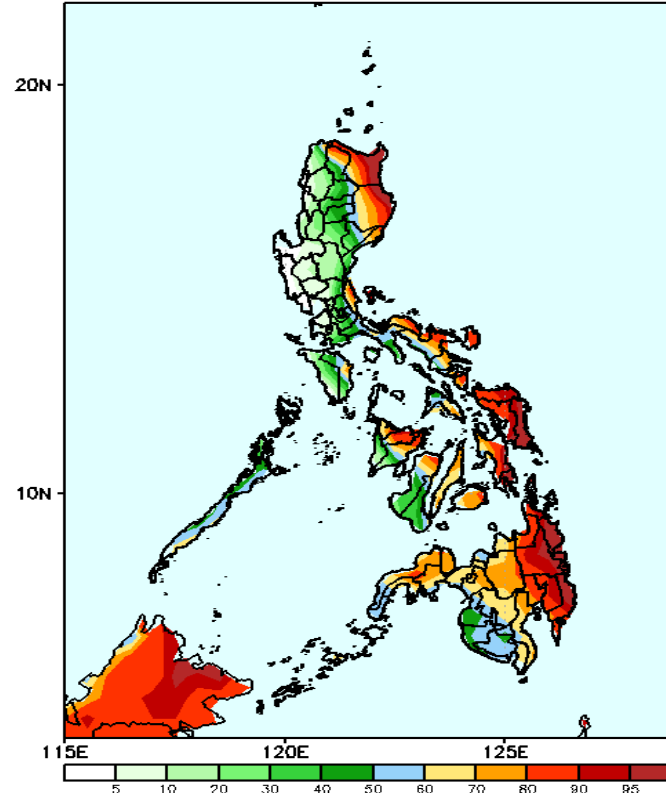
## Week 2: Jan 17-23, 2025

GEFS Week-2 Precip Anomaly  
Valid: 20250117 - 20250123



Rainfall deficit of 20-80mm is expected in most parts of the country except in eastern Isabela and southeastern and western Mindanao where 20-60mm increase of rainfall is expected.

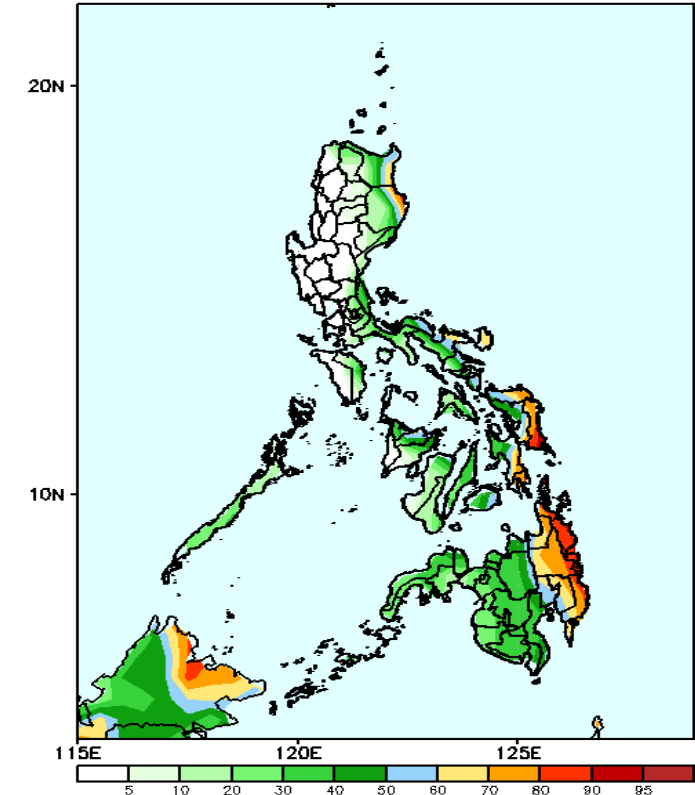
GEFS Week-2 Exceedance Prob. > 25mm  
Valid: 20250117 - 20250123



### Probability to Exceed 25mm

- High to very high over Cagayan, Isabela, Catanduanes, Sorsogon, Eastern Visayas, Capiz, and western Mindanao;
- Moderate to high over CAR, Bicol Region, the rest of Visayas and Mindanao;
- Low to Moderate over the rest of Luzon

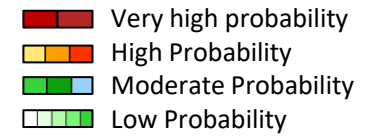
GEFS Week-2 Exceedance Prob. > 50mm  
Valid: 20250117 - 20250123



### Probability to Exceed 50mm

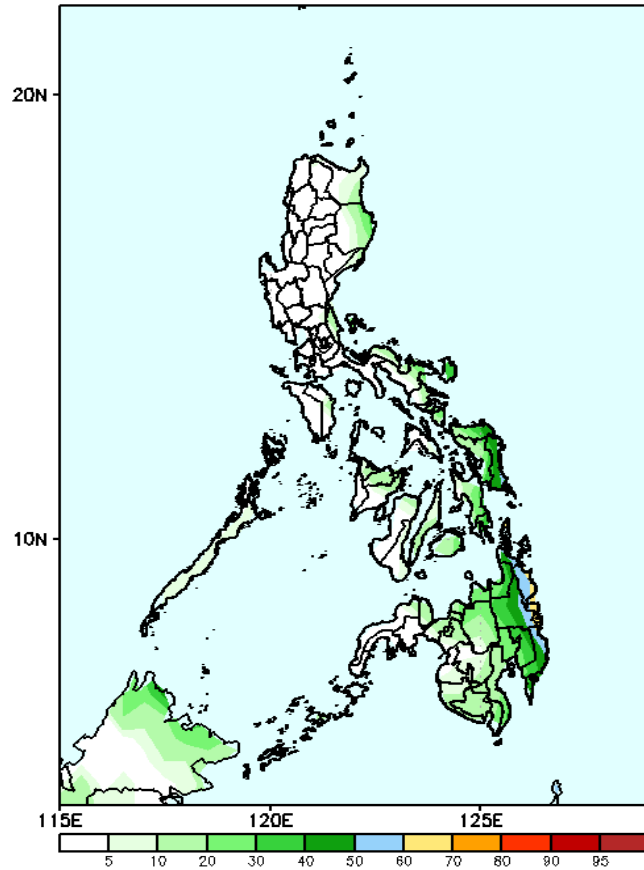
- Moderate to high over Batanes, the eastern part of Cagayan and Isabela, Bicol Region, Eastern Visayas and Eastern Mindanao;
- Low to moderate over the rest of Eastern and Southern Luzon, and the rest of Visayas and Mindanao;
- Low over the rest of Luzon.

# Exceedance Probability > 100/150/200 mm



## Week 2: Jan 17-23, 2025

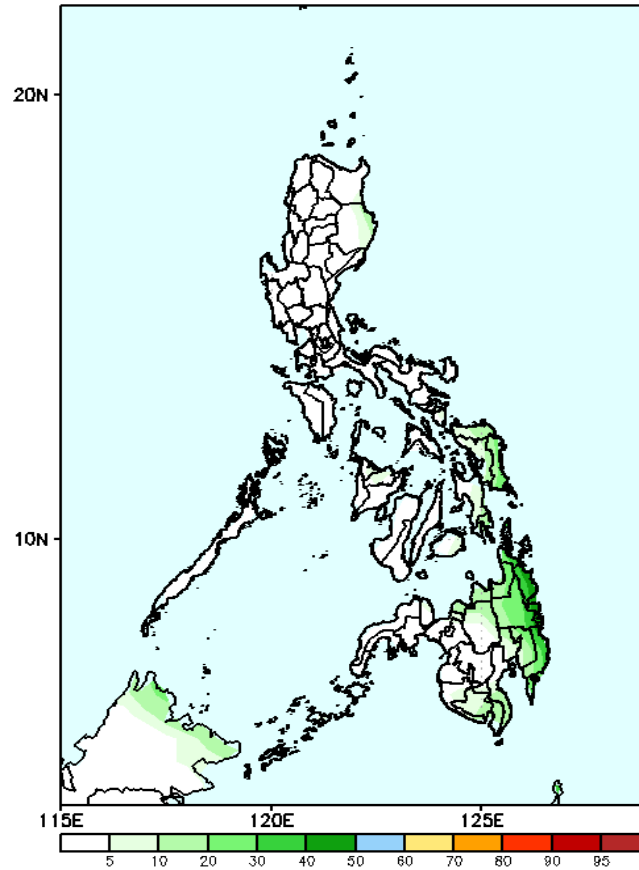
GEFS Week-2 Exceedance Prob. > 100mm  
Valid: 20250117 - 20250123



### Probability to Exceed 100mm

- Moderate to high over Surigao Provinces,
- Low to moderate over Eastern Samar and the rest of Mindanao;
- Low over the rest of the country.

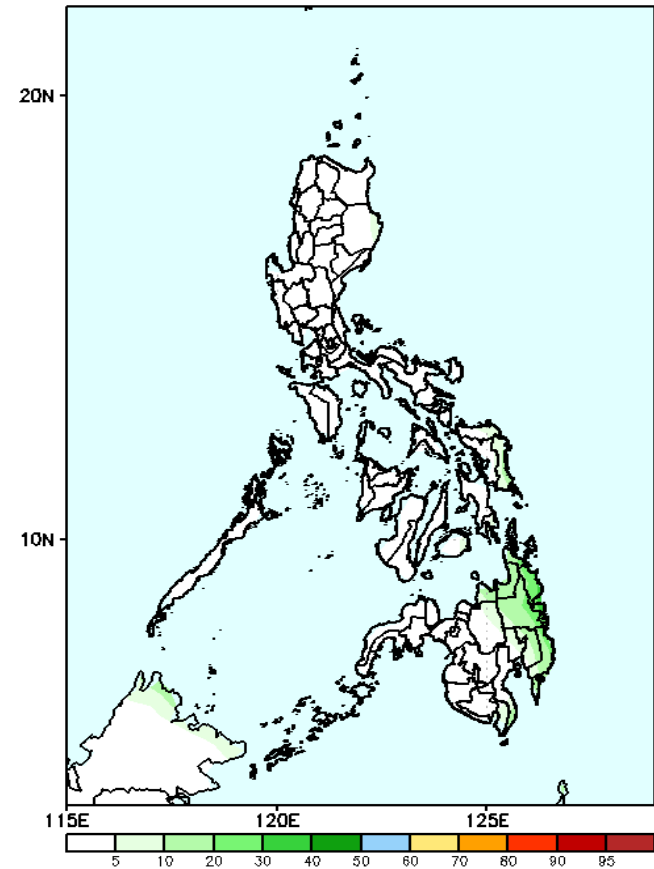
GEFS Week-2 Exceedance Prob. > 150mm  
Valid: 20250117 - 20250123



### Probability to Exceed 150mm

- Low across the country.

GEFS Week-2 Exceedance Prob. > 200mm  
Valid: 20250117 - 20250123

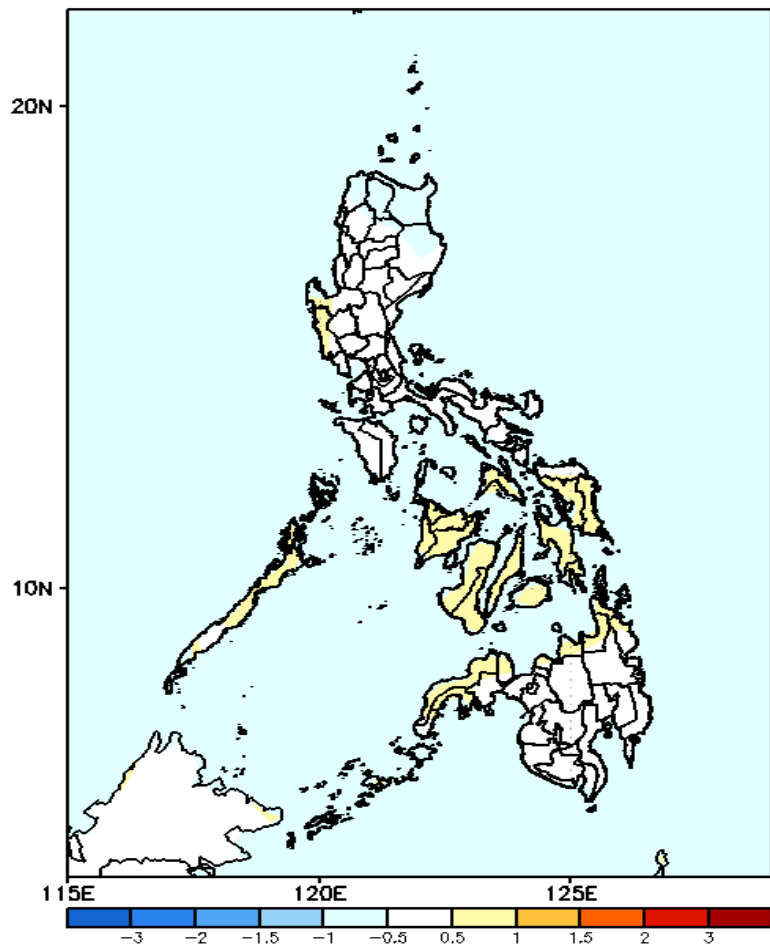


### Probability to Exceed 200mm

- Low across the country.

# GEFS Week-1 & 2 Forecasts: T2m Anomaly

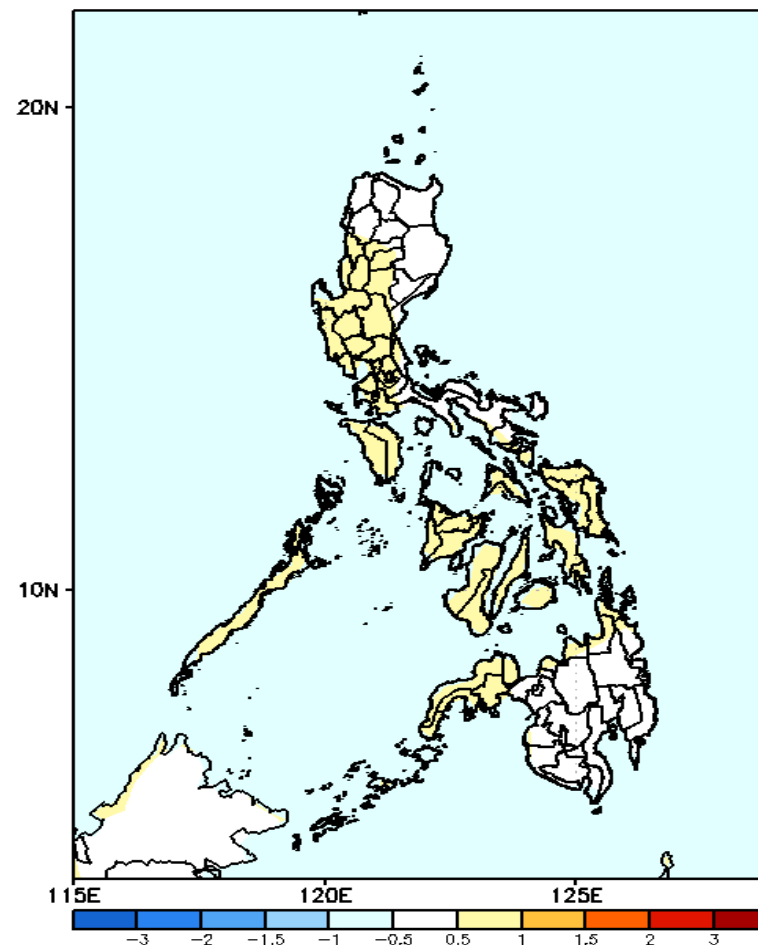
GEFS Week-1 T2m Anomaly  
Valid: 20250110 - 20250116



## 2m Temperature Week 1: Jan 10-16, 2025

Near to slightly warmer than average surface air temperature will likely be experienced in in most parts of the country.

GEFS Week-2 T2m Anomaly  
Valid: 20250117 - 20250123



## 2m Temperature Week 2: Jan 17-23, 2025

Near to slightly warmer than average surface air temperature will likely be experienced in in most parts of the country.